

## PRODUCT GUIDE

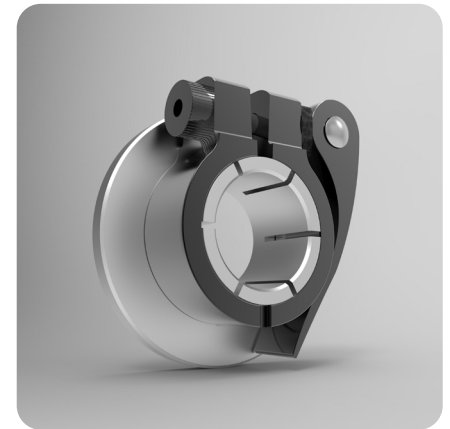
# Stafford's *Python*™ Quick Adjust Product Line

Designed with convenience and efficiency in mind, these user-friendly products facilitate fast, one-handed installations and positioning.



## *Python*™ Flange Collar

Our Python™ Flange Collars are perfect for low-speed rotary motion systems where regular adjustments are needed. A split hub on the flange allows for easy installation and the integrated Flip-Lok™ clamp with thumbscrew tension nut allows one-handed tightening and positioning. Includes a keyway and a small flange with no mounting holes. Need a Python™ collar in metric? See our website for metric specifications.



Item #	Bore	Flange O.D.	Flange Width	Total Width
PYFA006	3/8 in	2.1 in	0.25 in	1.03 in
PYFA007	7/16 in	2.1 in	0.25 in	1.03 in
PYFA008	1/2 in	2.1 in	0.25 in	1.03 in
PYFA009	9/16 in	2.2 in	0.25 in	1.03 in
PYFA010	5/8 in	2.2 in	0.25 in	1.03 in
PYFA011	11/16 in	2.375 in	0.25 in	1.03 in
PYFA012	3/4 in	2.375 in	0.25 in	1.03 in
PYFA013	13/16 in	2.5 in	0.25 in	1.03 in
PYFA014	7/8 in	2.5 in	0.25 in	1.03 in
PYFA015	15/16 in	2.5 in	0.25 in	1.03 in
PYFA100	1 in	2.5 in	0.25 in	1.03 in
PYFA101	1-1/16 in	2.875 in	0.25 in	1.03 in
PYFA102	1-1/8 in	2.875 in	0.25 in	1.03 in
PYFA103	1-3/16 in	2.875 in	0.25 in	1.03 in
PYFA104	1-1/4 in	2.875 in	0.25 in	1.03 in



# Python™ Flange Mounting Collar

Our Python™ Flange Mounting Collars allow easily repeatable and adjustable placement without the use of tools. Our integrated Flip-Lok™ clamp with thumbscrew tension nut allows one-handed installation and adjustment in virtually any low RPM system and provides an axial load capacity of 200 lbs. Includes a keyway and a six-hole bolt pattern for many mounting options. Also available in metric - see our website for metric specifications.



Item #	Bore	Keyway Width	Flange O.D.	Flange Width	Total Width
PYFMA006K	3/8 in	.094 in	2.1 in	0.25 in	1.03 in
PYFMA008K	1/2 in	.125 in	2.36 in	0.3 in	1.08 in
PYFMA010K	5/8 in	0.188 in	2.61 in	0.35 in	1.13 in
PYFMA012K	3/4 in	0.188 in	3.11 in	0.445 in	1.225 in
PYFMA014K	7/8 in	0.188 in	3.36 in	0.445 in	1.225 in
PYFMA100K	1 in	0.25 in	3.36 in	0.445 in	1.225 in
PYFMA102K	1-1/8 in	0.25 in	3.36 in	0.445 in	1.225 in
PYFMA104K	1-1/4 in	0.25 in	3.485 in	0.445 in	1.225 in

## Materials

Aluminum is standard.  
Steel and stainless steel are available upon request.

## Size

Available in standard imperial sizes listed above with a full metric line shown on our website.

## Bore Shape

Round bore is standard. Square, hexagonal, and threaded bores are available upon request.



Investing in Stafford's Quick Adjust Product line helps to improve efficiency, speed, quality /repeatability, and overall system performance in a wide variety of applications.

Contact us for more information on how the new Python™ Quick Adjust product line can improve your operations, or request a quote today.